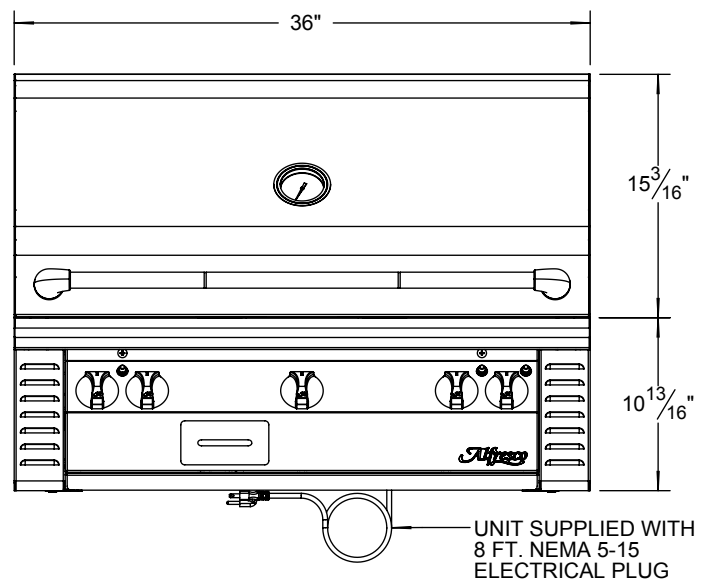
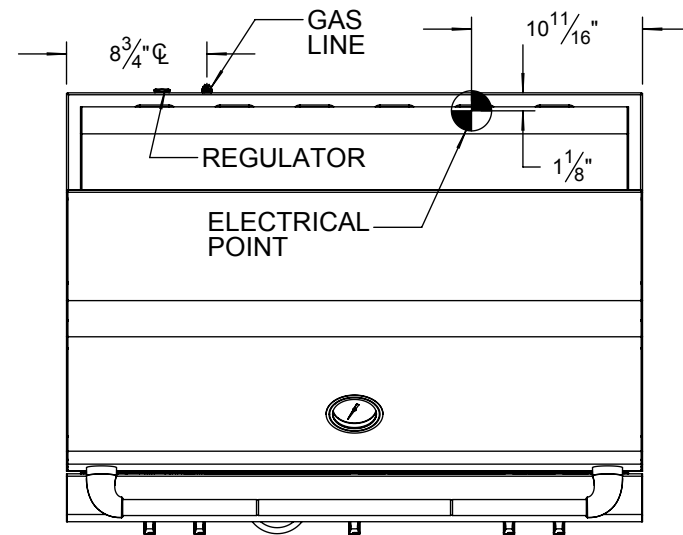
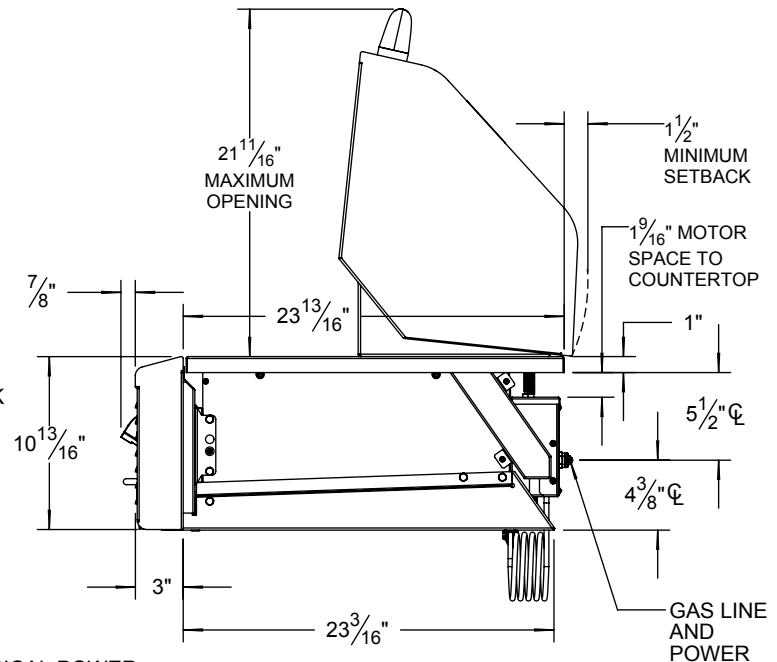
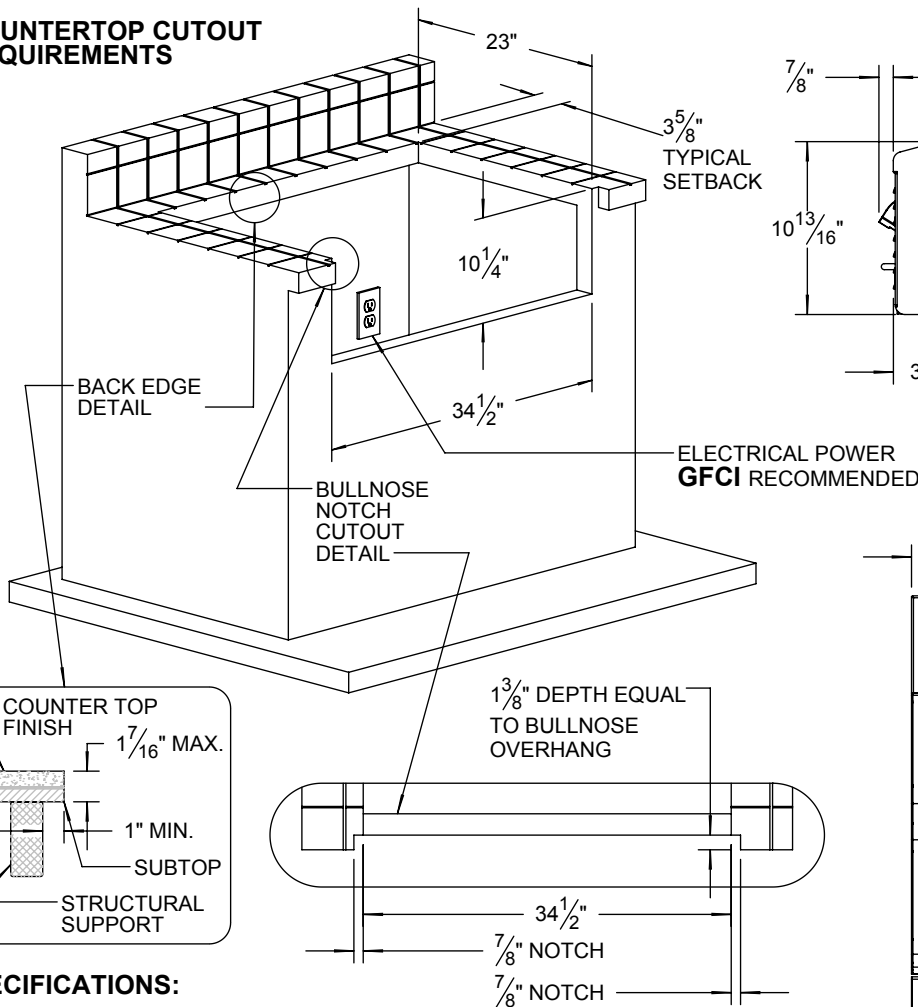


TYPICAL ALX2-36 / 36 SZ INSTALLATION



COUNTERTOP CUTOUT REQUIREMENTS



SPECIFICATIONS:

BTUH = 108,000
FUEL = NG @ 5" W.C. OR LP @ 10" W.C.
ELECTRICAL POWER = 115 VAC / 1.44 AMPS / 60 Hz.
GAS CONNECTION - 1/2" NPT (NG) OR 3/8" ODF (LP)

NOTE: COUNTER MUST HAVE PROPER GAS SUPPLY
AND POWER SUPPLY FOR YOUR ALFRESCO BBQ.